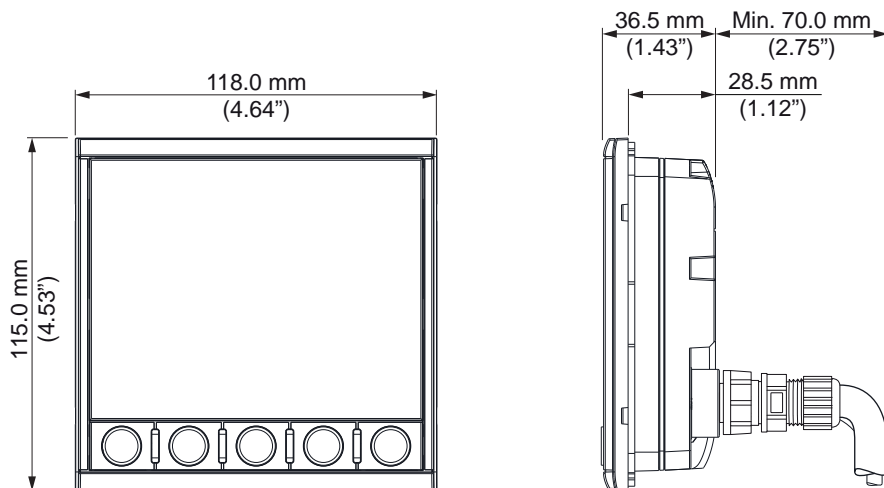


## Details

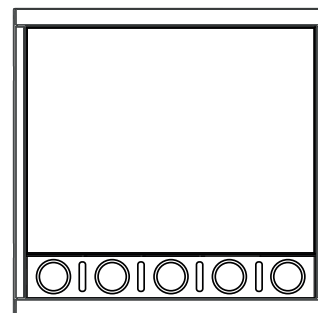


### Technical specification

Electrical	
Supply voltage	12 V DC (10 - 15 V DC)
Fuse rating	3 A
Power consumption max	2.16 W (160 mA at 13.5 V)
Network load	1 LEN
Display	
Size	4.1" diagonal, 4:3 Aspect ratio
Resolution	320 x 240 pixels
Brightness	1200 nits
Viewing angles	80° top/bottom, 80° left/right
Environmental	
Waterproof rating	IPx7
Operating temperature	-25°C to +65°C (-13°F to +149 °F)
Storage temperature	-40°C to +85°C (-40°F to +185 °F)



## YD42 INSTALLATION GUIDE



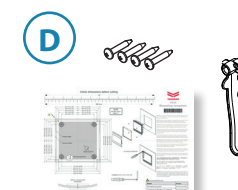
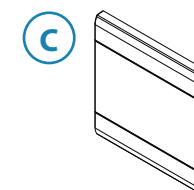
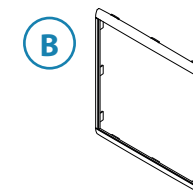
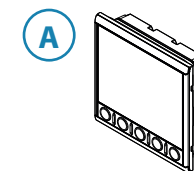
For product manuals, technical specifications, certificates and declarations, refer to the product website:

[www.yanmarmarine.com](http://www.yanmarmarine.com)

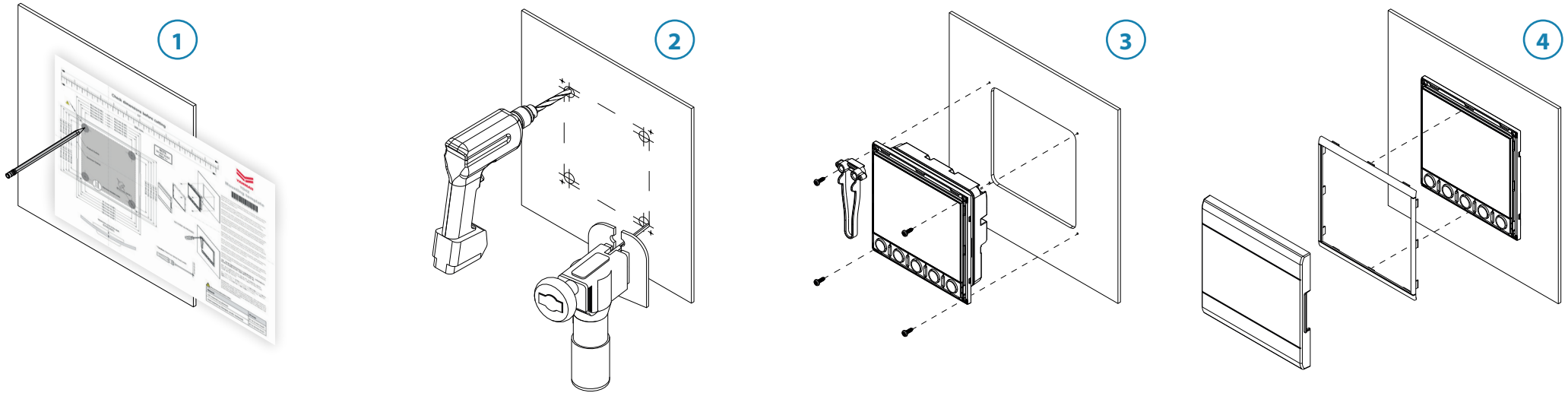


## Parts included

- A.** Display unit
- B.** Removable bezel
- C.** Suncover
- D.** Mounting kit
  - Mounting template
  - Screws
  - Screw jig

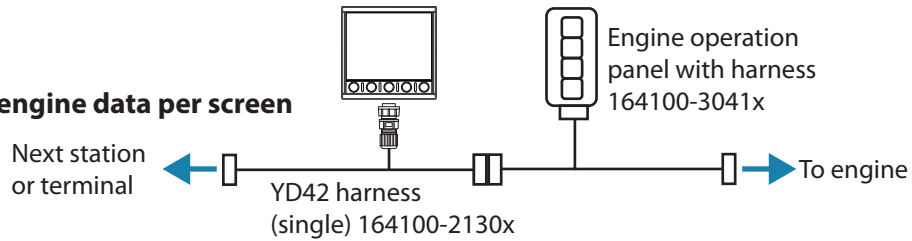


## Mounting

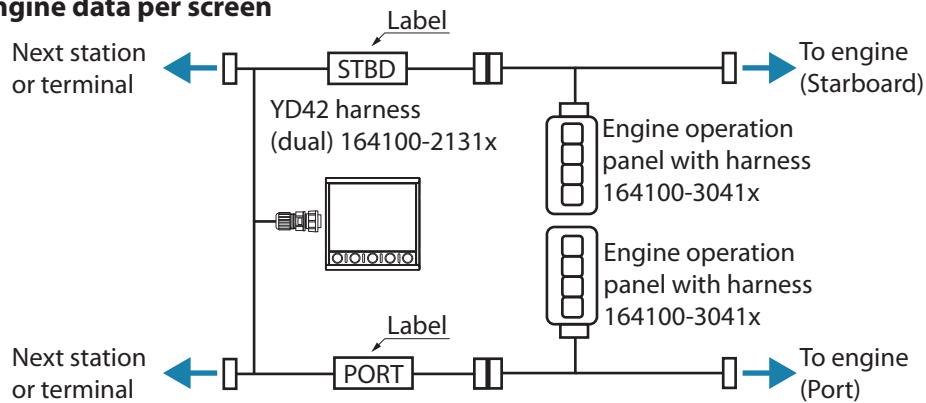


## System wiring

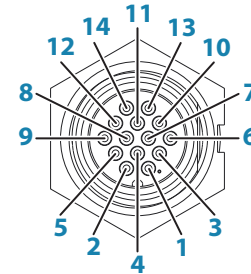
### Single engine data per screen



### Dual engine data per screen



→ **Note:** Connect "Port" and "Starboard" cables correctly by referring to the labels.



Pin	Description
1	CAN1_H (single engine or port engine)
2	CAN1_L (single engine or port engine)
3	Not used
4	DC negative
5	+ 12 V DC
6-10	Not used
11	Power ON
12	Not used
13	CAN2_L (starboard engine)
14	CAN2_H (starboard engine)

