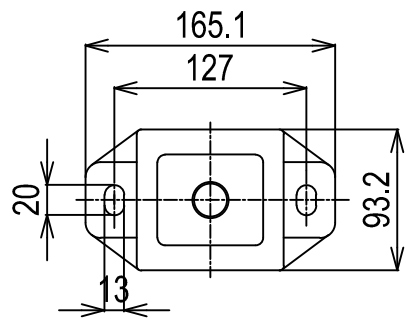
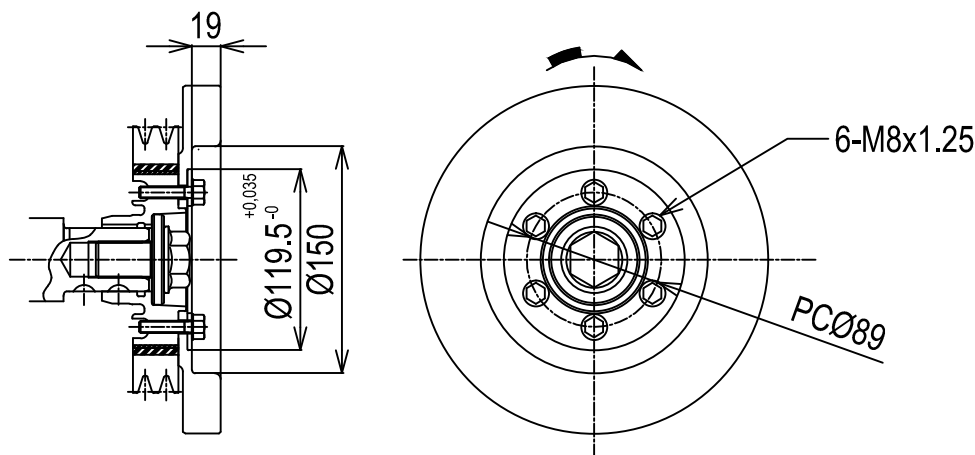


DETAIL OF MOUNTING BLOCK



DIRECTION OF ROTATION



DETAIL OF PULLEY
VIEWED FROM A

NOTE:

- 1.INNER AND OUTER TRANSOM SURFACE MUST BE PARALLEL WITHIN 3MM IN AREA OF COVERED BY TRANSOM PLATES AND REMAIN WITHIN TRANSOM THICKNESS LIMITS.
- 2.AREA COVERED BY GIMBAL HOUSING ASSEMBLY MUST BE FLAT TO WITHIN 1.6MM
- 3.AREA COVERED BY INNER TRANSOM PLATE MUST BE FLAT TO WITHIN 3.2MM
- 4.TRANSOM ANGLE : 13°to 16°
- 5.DWG.SHOWS MOUNTING BLOCKS AT COMPRESSED HEIGHT FRONT:COMPRESSED BY APRROX. 4MM
HEIGHT REAR:COMPRESSED BY APRROX. 0.6MM
- 6.● SHOWS THE CENTER OF GRAVITY.
- 7.FOR ADDITIONAL INSTALLATION INFORMATION AND SPECIFICATIONS PLEASE REFER TO THE YANMAR ENGINE INSTALLATION MANUAL

Engine:	6LPA-STZP2_BRAVO2	Release:	14-03-2007
Scale:	1:10	Date:	01-04-2013
		Dimensions:	mm