

# 4HAL2 series

MARINE  
AUXILIARY  
DIESEL ENGINE

98~183hp / 1200~1800rpm  
80~150kVA (64~120kW)

# YANMAR



- 4-cylinder, direct injection.
- 4HAL2-WT Conform to IMO Tier II emissions regulations.

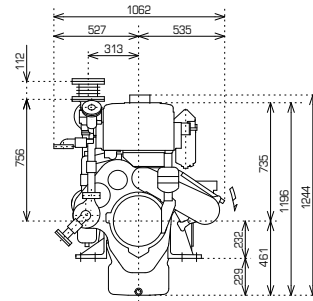
## Specifications

Model	4HAL2-TN1	4HAL2-TN		4HAL2-WT		
Number of cylinders	In-line 4					
Bore × stroke	mm 130 × 165					
Displacement	lit. 8.76					
Continuous rated engine speed	rpm 1200	1500	1800	1200	1500	1800
Continuous rated output	hp 98	121	157	122	156	183
Applicable generator capacity	kVA(kW) 80	100	130	100	125	150
	(64)	(80)	(104)	(80)	(100)	(120)
Frequency	Hz 60	50	60	60	50	60
Combustion system	Direct injection					
Aspiration	Exhaust Turbocharger					
Dry weight (Engine only)	kg 1030					
Dry weight (Gne. set)	kg 1855					

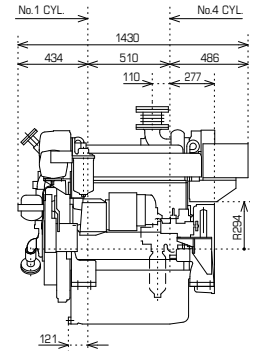
## Dimensions Unit:mm

Engine only

Front view



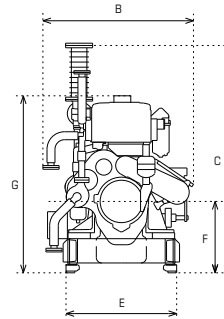
Left side view



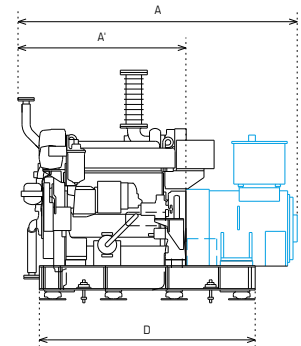
## Generator set dimensions for your reference Unit:mm

Generator set dimensions shown below depend on generator model

Front view



Left side view



G : Minimum Height for Removing Piston ( Not included the dimension for bolt fitting to piston remove. )

Model	A	A'	B	C	D	E	F	G
4HAL2-TN1	2070	1245	1117	1685	1600	820	529	1312
4HAL2-TN	2070	1245	1117	1685	1600	820	529	1312
4HAL2-WT	2070	1245	1117	1685	1600	820	529	1312

— Generator